

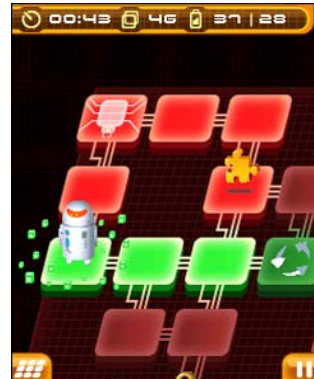
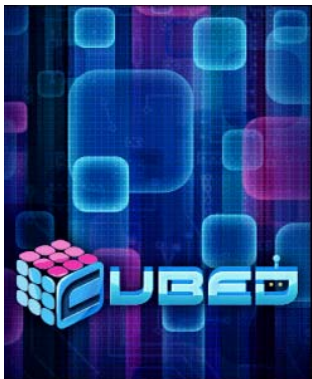
C U B E D

Use of this Application is subject to the terms and conditions of the Customer Agreement, your Calling Plan and Get It Now terms of use including the Get It Now License Agreement, which can be found at [www.vzwshop.com/popups/licenseagreement\\_popup.aspx](http://www.vzwshop.com/popups/licenseagreement_popup.aspx).

**Product Description**

Hello repair unit11010, the main memory unit has crashed and must be repaired. As BOT time and battery power are against you as you traverse intelligently designed mazes and collect puzzle pieces to regain your memory and try to restore power to the core of the system, the CUBE. As long as the core exists so shall you. Discover BOT's story and unravel the secrets of the CUBE. Collect special abilities that allow BOT to overcome his virtual prison. Are you CUBED?

**Screenshots**



**Using the Application**

**How to Play**

How to Play

To begin, choose START GAME from the main menu. Choose NEW GAME to begin the main game mode.

**Controls**

General navigation of menu screen(s): Use the UP/DOWN/LEFT/RIGHT keys on your handset navigation pad to highlight an option and press the OK/SELECT key to confirm.

Key	Action
Ok/ 5 Key	Perform OK command
Left/ 4 Key	Perform left command
Right/ 6 Key	Perform right command
Up/ 2 Key	Perform up command
Down/ 8 Key	Perform down command

**Multiplayer Options**

n/a

**Tips and Tricks**

Try not to traverse over steps already highlighted.

Use the map to plan out paths.

**FAQs**

**• How do I get CUBED on my mobile phone?**

To get the game, follow the following steps:

1. From your mobile phone, which must be "Get It Now"-enabled, go to the appropriate menu that allows you to download games.
2. Select the Shopping Cart to access the game shop. You will find the game in the appropriate game category.
3. Once you select the type of pricing plan you wish to purchase, you may begin playing the game as soon as the download completes.

**• Why Can't I play all the Time attack levels?**

Time attack levels can only be played once you have completed the level in story mode.

**• How do I use items?**

Open your inventory and highlight the item you want to use and select ok.

**• What's the difference between Story mode and Time Attack?**

In time attack you are graded on how fast you can complete a level.

**Disclaimer**

**CUBED**© 2010 SkyZone Entertainment, Inc. SkyZone® is a registered trademark and its associated logos and artwork are exclusive property of SkyZone Entertainment, Inc. **CUBED** developed by Gamelion Studios. All rights reserved.